

# AMP<sup>®</sup>

FACTORY DIRECT LANDSCAPE LIGHTING  
**FOR PROFESSIONALS**





# PROFESSIONAL LANDSCAPE LIGHTING

Enhance your customers nighttime experience with landscape lighting. Open their eyes to the transformation; their home and property will come alive at night. Your customers, and their guests will be delighted with the results.

The first step is to recognize that lights can accomplish much more than just beautifying a property. They can provide safety, security, functionality, and benefit the environment.

Let's start by identifying the goals of landscape lighting. Then, you can begin planning how to achieve them.

---

## Improve Security

Provide sufficient illumination in critical areas throughout the property to deter, detect, and identify intruders.

## Ensure Safety

Prevent trips and falls by illuminating paths, pool areas, steps, docks, and other places with obstacles or changes in elevation.

## Create a Masterpiece

Lighting can reveal beauty already present and create new beauty through the interplay between light and shadow. Selectively illuminate objects within the landscape and cast shadows to make surfaces more interesting.

## Lifestyle & Utility

Create a nighttime backyard oasis by illuminating decks and patios so you can socialize, cook, play sports, or other activities that you and your family enjoy.

## Be Green with LED

With AMP® super-efficient LED lights, you can save energy and money while helping to preserve the environment.

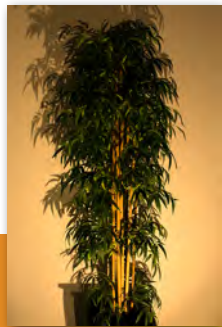


# LIGHTING DESIGN TIPS

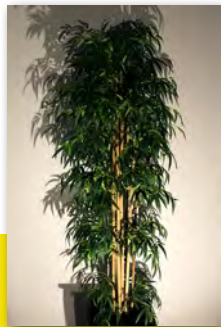
Illumination from lighting fixtures and lamps has qualities that affect how it appears and what it can accomplish. Here are two of the most important:

**Color temperature** refers to light's warmth or coolness. The subtle difference in these hues determines the overall mood.

**Beam angle** describes the width of the light beam. It is important to make sure you have ideal coverage of the illumination.



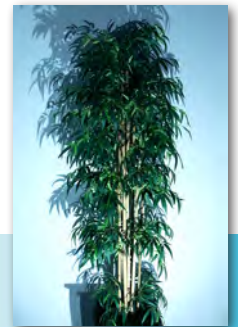
2200K



2700K



3000K



4000K

## VERY WARM/WARM WHITE (2200K)

2200K is a very warm white. This color temperature closely resembles the color of sodium lamps used in some streetlights.

## WARM/NEUTRAL WHITE (2700K-3000K)

Noticeably cooler (bluer) than 2200K. It tends to make foliage look less yellow, and is especially effective for lighting vegetation. 2700K is the most popular as it is warm and welcoming.

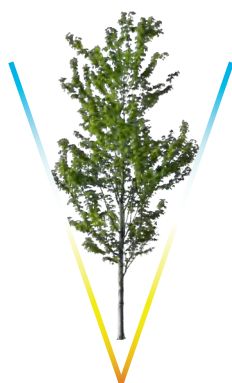
## COOL WHITE (4000K)

Quite blue compared to 2700K - 3000K and seldom used for general landscape lighting. May be used selectively on blue plants, or when trying to simulate moonlighting (4200K) effects with downlighting. May also be preferred for commercial applications.



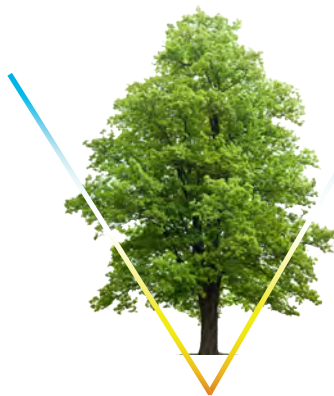
## NARROW/SPOT 10-24° Beam Angle

Very narrow beam of light ideal for narrow trees, columns, and flag poles.



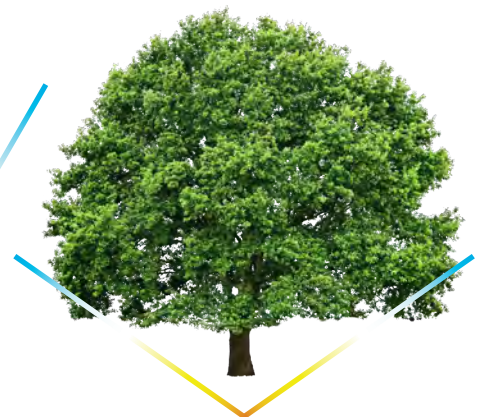
## NARROW FLOOD 30-38° Beam Angle

Medium width for general accent lighting. Projects a distinct cone shape on walls.



## WIDE FLOOD 60-80° Beam Angle

Wide beam provides more even coverage on walls with a less distinct conical shape.



## VERY WIDE FLOOD 80-120° Beam Angle

Very wide beam provides a large area of coverage. Best for very large trees or for even coverage over a wide wall.



# SPOTLIGHTS

If landscape lighting is painting with light, then spotlights are the brushes. Every model is professional quality and delivers precise beams of light to satisfy the goals of any lighting design.

## SPOTLIGHTING TECHNIQUES



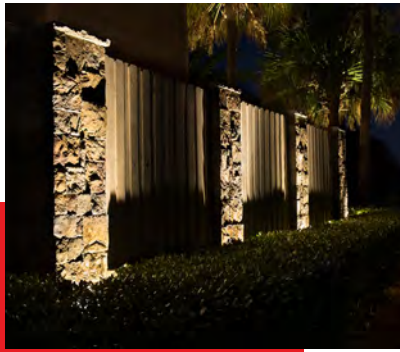
### Highlighting

Created by placing a spotlight at the base of an outdoor feature. Experiment with different designs by varying the distance and angle of the fixture.



### Silhouetting

Place a spotlight behind the feature and aim towards an adjacent wall to create an illuminated backdrop.



### Wall-Washing/Shadowing

Create a soft, even glow that comes off the wall or facade it's pointed toward.



### Accenting

Angle a spotlight to point out an architectural feature, statuary, or plants. Use a narrow beam spotlight to add flair and mystery to your accent lighting.

## SPOTLIGHTING TIPS

Spotlights are used for emphasis, calling attention to specific architectural or landscape features. Spotlights use a narrow beam, drawing focus to one object at a time. The intention of lighting the home is not to flood it with light, making it look over-lit. You should use spotlights selectively to apply creative, visual accents to the home.



*PinnaclePro (MR16)*



*AggregatePro (MR16)*



*EcoPro (MR16)*



*VariantPro (MR16)*



*Mini PinnaclePro  
(MR11)*



*BulletPro  
(MR8)*



*AtomPro*



*ControlPro™ 300*



*ControlPro™ 500*



*ControlPro™ 800*

*Finishes (Brass, Copper & Black)  
AMP® ONE Integrated, Constant Output  
Integrated, and Lamp-Ready Models Available*



# CLASSIC PATH LIGHTS

This series includes luminaire designs that stand the test of time. With simple, clean lines that complement most architecture, these fixtures look at home along residential paths and gardens.



*MagnumPro™*



*ConicaPro™*



*SummitPro™*

## 1. Well Engineered and Constructed

Our fixture designers create path lights that are beautiful right out of the box and that maintain that beauty after years in the landscape. Our path lights are constructed of sturdy brass or copper.

## 2. Designed for Performance

Path lights have important functions, primarily safety, security, and beauty. To fulfill these functions, the lights must deliver the right amount (and quality) of illumination. Our path lights are tested in our innovation lab to make sure they deliver light with the correct properties, then are tested in the field for real world confirmation.



*Path Light Stem*



*TerrainPro*



*ConexPro*



*StetsonPro*



*MarqueePro*



*DynastyPro 7"*



*DynastyPro 5"*



*DynastyPro 3"*

*Finishes (Brass, Copper, & Black) | Sizes (24" Standard & 14" Mini)*

[www.amplighting.com](http://www.amplighting.com) | (813) 978-3900

Revised: June 2022

# DECORATIVE PATH LIGHTS

Decorative path and area lights are the perfect way to make any property stand out from the rest. Beautiful day and night, these fixtures are ideal for pathways, stairs, and landscape regions such as gardens, patios, and docks.



*Silhouette*



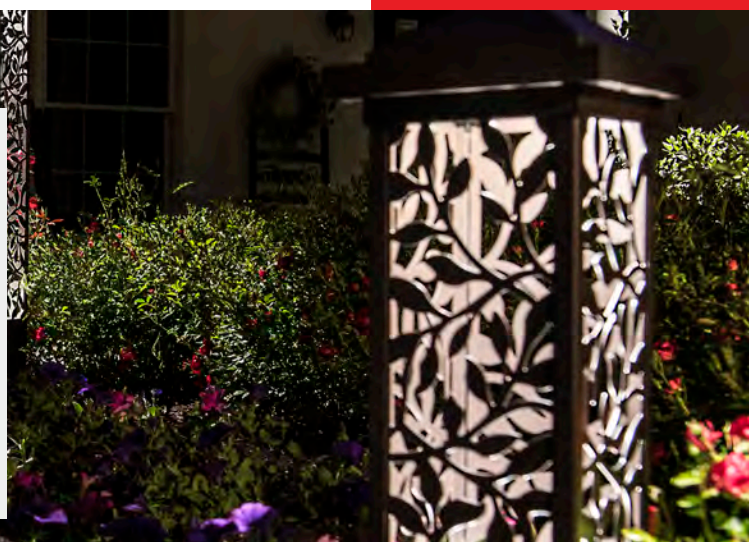
*26" Customizable Bollard*



*Stagecoach*

## PATH LIGHT TIPS

- Larger hats and taller fixtures tend to have wider beam spreads
- Smaller hats look best along narrow paths
- Shorter fixtures can be used for any sized path or garden bed. Just be careful along walkways since they can be tripping hazards
- Taller fixtures are good in garden beds and short bushes



*PolynesianPro Torch Light*



*BeaconPro*



*Dual Mini PinnaclePro*



# DOWNLIGHTS

Downlighting is a landscape lighting technique used to simulate moonlighting. This is accomplished through installing downlight fixtures in trees or high trellises or other structures.



*PinnaclePro Downlight (MR16)*



*AMP® ONE ControlPro 200 Downlight*



*AerialistPro Hanging Light with Shade*



*Estate PendantPro*



*AMP® ONE Integrated, Constant Output  
Integrated, and Lamp-Ready Models Available*



# FLOOD LIGHTS

Flood lights are used to illuminate walls, signs, tree canopies, and similar applications requiring wide spread lighting. They can be used for wall washing and grazing techniques as well as provide safety and security for yards and other large, outdoor areas.



*EquaPro*



*DispersePro*



*DiffusePro*



*ParamountPro*



*StoutPro*



*SpectrumPro*



*12W LED Flood Light*



*17W or 22W LED Flood Light*



*27W LED Flood Light*

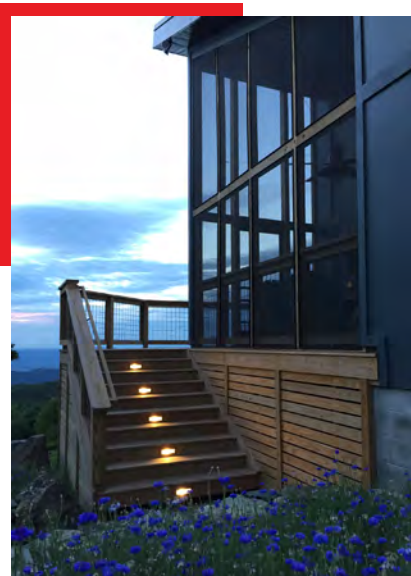
*Constant Output Integrated, and Lamp-Ready Models Available*

[www.amplighting.com](http://www.amplighting.com) | (813) 978-3900

Revised: June 2022

# DECK & STEP LIGHTS

These lights are compact and project light downward. These are perfect fixtures to mount on decks, railings, posts, docks, and steps. Made to withstand the elements and last for a lifetime.



## DECK & STEP LIGHTING APPLICATIONS

### 1. Safety

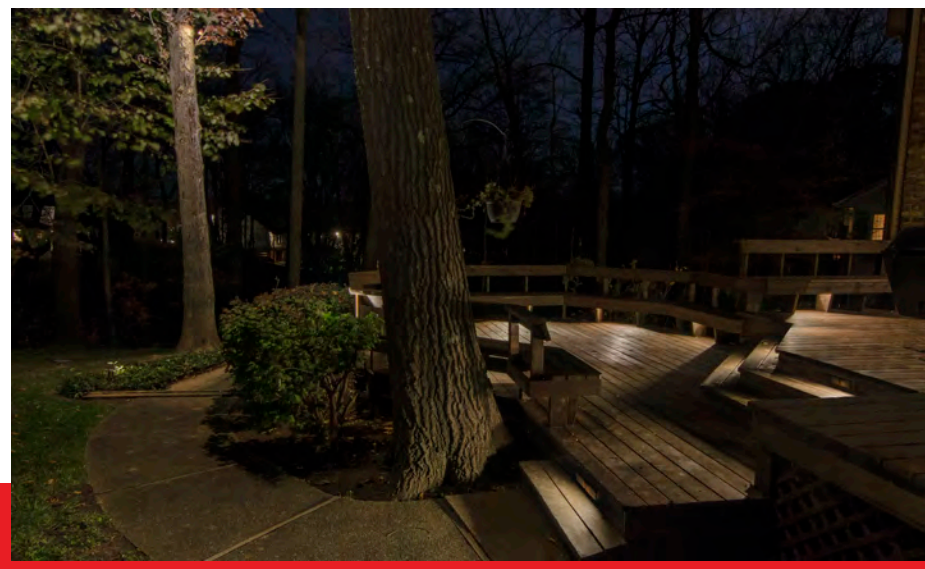
Safety is the most important reason for deck and step lighting. Lighting on decks, docks, patios, and steps minimizes trip and fall hazards.

### 2. Enhance Your Outdoors

Using deck and step lighting around pool areas, outdoor kitchens, fireplaces, boat ramps, and more can lend itself to entertaining outdoors.

### 3. Visual Appeal

Lighting in common deck and step applications can add a dramatic effect to your home's nighttime landscape.



*InfusePro Step Light  
(Optional Glare Guards)*



*InfusePro Thin Step Light  
(Optional Glare Guards)*



*Deck-Design Pro™ Rounded*



*Deck-Design Pro™ Squared*



*Deck-Design Pro™ Classic*

*Finishes (Brass & White) | Integrated and Lamp-Ready Models Available*

[www.amplighting.com](http://www.amplighting.com) | (813) 978-3900

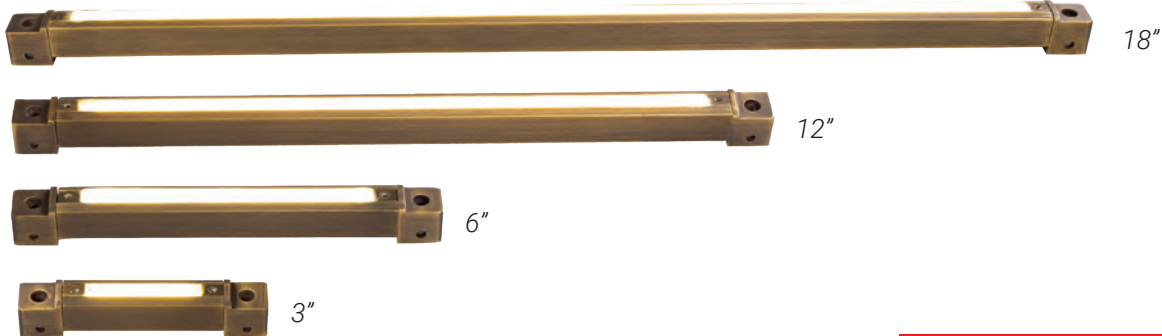
Revised: June 2022



# HARDSCAPE LIGHTS

Hardscape lights are low profile lighting, perfect for tight spaces. Flexible mounting options provide endless possibilities for mounting under benches, railings, overhangs, under hardscape capstones, and more.

*Soft-Wash Pro™ Rotatable Hardscape*



## HARDSCAPE LIGHTING APPLICATIONS

### 1. Retaining Walls

Use hardscape lighting to help light the way near retaining walls.

### 2. Decks, Docks, Steps

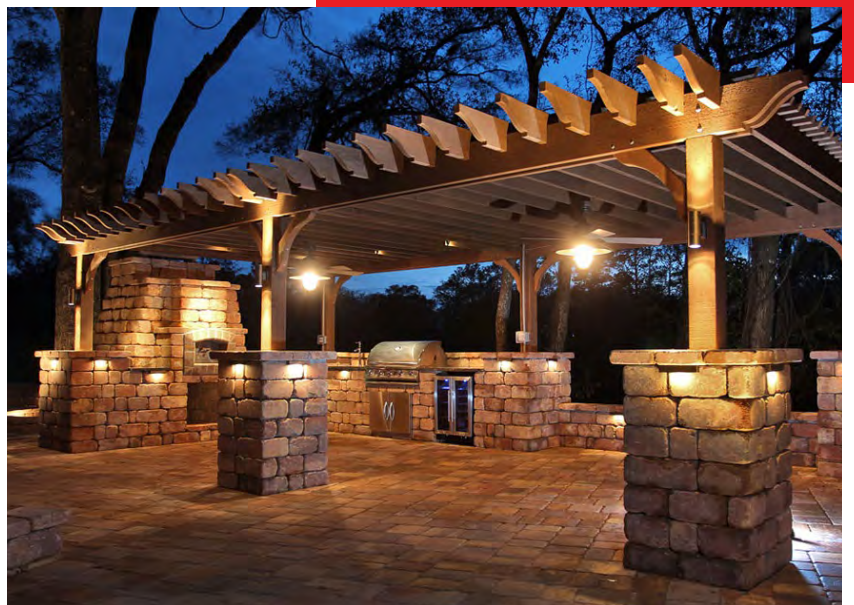
Use hardscape lighting to prevent trips, falls, and other hazards.

### 3. Outdoor Kitchens

Enjoy your outdoor kitchen and entertainment area day or night.

### 4. Decorative Walls

Use hardscapes to bring life and interest to architectural spaces.



*PuckPro Bi-Pin  
LED Puck Light*

*(Various Lumen & Color  
Temperatures Available)*



*DescentPro*



*G2 TorrentPro  
(Rotatable)*



*LateralPro*

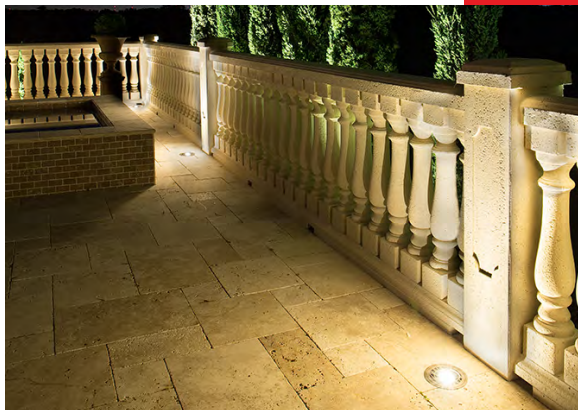
*Integrated and Lamp-Ready Models Available*

[www.amplighting.com](http://www.amplighting.com) | (813) 978-3900

Revised: June 2022

# WELL & IN-GRADE LIGHTS

Used for in-ground lawn applications and for uplighting trees, columns, and architectural features when above-ground fixtures are not desired.



## WELL LIGHTING DESIGN TIPS

Use well lights for below-ground applications.

### 1. Lawns

Use well lights when fixture location must be in your lawn. Since these fixtures are level with the ground's surface, they will be safe from lawn mowers and other damaging lawn equipment.

### 2. Decks, Docks, Patios, and Pathways

Well lights are great for these applications because again, they are level with the ground's surface. This allows them to integrate with "hard" surfaces. Our high-quality products will stand up to foot and vehicle traffic in these areas as well.

### 3. Columns

Well lights are great for lighting columns because their light source is low to the ground. This means that you may light columns or other features from the ground up with no dark spots at the base of the feature.



*HydraPro™  
MR11 In-Grade Light  
(Optional Glare Guards)*



*HydraPro™  
MR11 Well Light*



*HydraPro™  
LED Well Light*



*HydraPro™  
MR16 Well Light*



*HydraPro™ LED  
In-Grade Light  
(Optional Glare Guards)*



*HydraPro™ MR16  
In-Grade Light  
(Optional Glare Guards)*

*AMP ONE Integrated, Constant Output Integrated, and Lamp-Ready Models Available*

[www.amplighting.com](http://www.amplighting.com) | (813) 978-3900

Revised: June 2022



# UNDERWATER LIGHTS

Underwater lights add glowing accents to fountains, ponds, and other water features. They can also be used to illuminate waterfalls and surrounding rocks and plant materials.



## USE UNDERWATER FIXTURES FOR:

### 1. Atmosphere Enhancement

Enhance the atmosphere of your nighttime waterscapes. Add depth and drama to these features to bring life to your pond, fountain, or waterfall features at night.

### 2. Safety

Improve the safety of your property by adding underwater lighting to add visibility to ponds, decks, docks, and boat landings to prevent trips and falls.



*HydraPro™ Integrated  
LED Underwater Light  
(Optional Glare Guards)*



*HydraPro™ MR16  
Underwater Light  
(Optional Glare Guards)*



*HydraPro™ MR11  
Underwater Light  
(Optional Glare Guards)*



*MarinerPro LED  
Underwater Light*

*Optional Glare Guards Available. AMP ONE Integrated, Constant Output Integrated, and Lamp-Ready Models Available*

[www.amplighting.com](http://www.amplighting.com) | (813) 978-3900

Revised: June 2022

# RGBW COLOR LIGHTING

These RGBW color-changing LED fixtures are designed for bright illumination with vivid, balanced colors of light. Each fixture utilizes powerful, efficient integrated LEDs with IR remote control capabilities allowing for simple color changing and dimming. Various models available in low-voltage (12V) and line-voltage (120V) for larger/commercial applications.



RGBW 15W LED Flood Light  
(Dimmable)



RGBW 30W LED Flood Light  
(Dimmable)



120V RGBW 15W LED  
Flood Light (Dimmable)



120V RGBW 30W LED  
Flood Light (Dimmable)

**COMING SOON**

**COMING SOON**

**COMING SOON**



RGBW HydraPro™ Integrated  
Ingrade Light



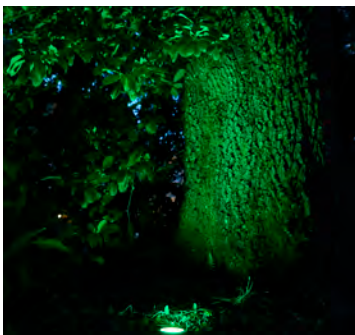
RGBW HydraPro™ Integrated  
Well Light



RGBW HydraPro™ Integrated  
Underwater Light



RGBW G2 ControlPro™ 800



AMP® ONE RGBW Remote Control





# LANDSCAPE LIGHTING KITS

AMP® lighting experts designed these kits to make your outdoor lighting project easy. From solid brass fixtures to cable, LED bulbs and more, everything you need for a high-performance landscape lighting system is included in one convenient package.



AMP® Professional Landscape Lighting Kit  
(8) Spotlight | (2) Path Light



AMP® AggregatePro Spotlight  
MagnumPro™ Path Light Kit



AMP® AggregatePro Spotlight Kit



AMP® MagnumPro™ Path Light Kit



AMP® HydraPro™ MR-16 In-Grade  
Expansion Kit



AMP® AggregatePro Spotlight  
Expansion Kit



AMP® MagnumPro™ Path Light  
Expansion Kit

# WILDLIFE FRIENDLY

Florida Fish and Wildlife Conservation Commission (FWC) approved, these fixtures are specifically manufactured for Turtle-Safe landscape lighting. The wavelength of the required lamps provides adequate lighting for humans while being virtually invisible to the sea turtles it's designed to protect. This is done to prevent sea turtles from being distracted by the light and coming inland where they often perish.



*Turtle-Safe LED Lamps*  
(G4 Bi-Pin, MR11 & MR16 Lamps Available)



*Mini Turtle-Safe Brass Path Light*  
(Lamp Ready)

## DARK SKY APPROVED LANDSCAPE LIGHTING FIXTURES



*Deck-Design Pro™ Classic*



*Silhouette Path Light*



*DescentPro Hardscape Light*



*ConicaPro™ Path Light*



*PillarPro Post-Top Light*



*Wide NovellePro Path Light*



# SOLAR

Solar-powered light fixtures have provided homeowners with illumination at virtually no costs with little-to-no effort needed for installation. While the convenience is unmatched in the industry, the overall quality of the lighting fixtures has left much to be desired; until now that is.



## Solar LED Brass Fixture Benefits

1. Premium-grade internal components, solid brass construction, and mono-crystalline solar panel.
2. Long-lasting. Powers on at dusk at 200 lumens (lasts for several hours), then gradually dims throughout the night and powers off.
3. Built to outperform and outlast any solar path lights on the market today. Lifetime Warranty (Fixture)



*Solar LED Brass Path Light*



*Solar LED Deck Light (Black)*



*Solar LED Brass Dock Light*



*Solar LED Brass Post-Top Light*

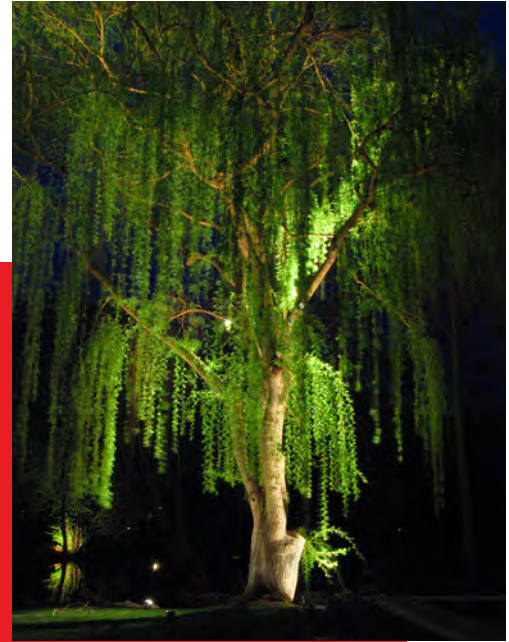
*Brass & Black Options Available in most fixtures*

[www.amplighting.com](http://www.amplighting.com) | (813) 978-3900

Revised: June 2022

# 120V FIXTURES

Line voltage fixtures are designed for professional installers and are primarily used in commercial, security, and public-use applications. 120V requires an electrician for installation.



*9W LED Flood Light*



*17W LED Flood Light*



*PilotPro*



*6W LED Spotlight*



*12W LED Spotlight*



*18W LED Spotlight*

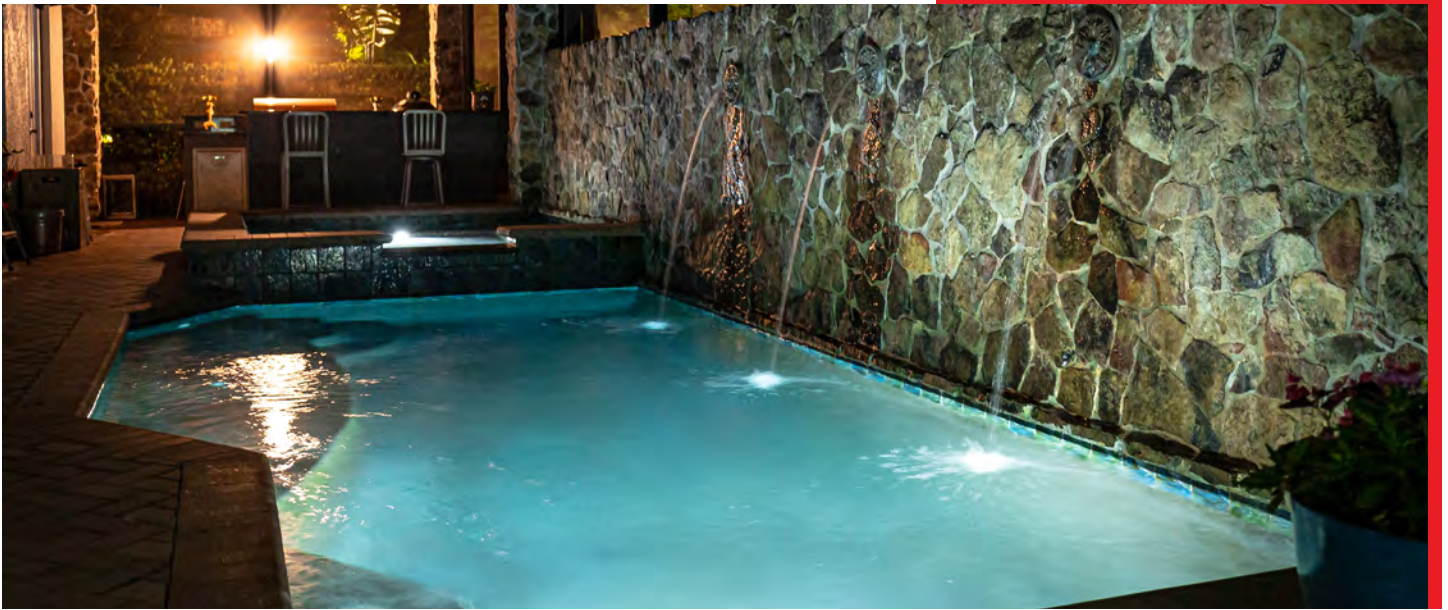


*Roman  
Estate Path*



# POOL & SPA

Featuring standard E26 bases, AMP® pool and spa bulbs are easy to install. Low-voltage (12V) and line-voltage (120V) models are available in RGBW as well as 3000K or 5000K color temperatures. With AMP® Pool & Spa LED bulbs, you can transform any client's pool area into a paradise!



*AMP® Pool Max*



*AMP® Petite Pro*



*AMP® 150 Watt Pool & Spa  
Clamp-Connect Transformer*



*AMP® 300 Watt Pool & Spa  
Clamp-Connect Transformer*

# TRANSFORMERS

Low voltage landscape lighting transformers are designed for easy installation, consistent performance, and enduring longevity. They work for all types of low voltage outdoor lighting.



## AMP® Slim Line and Clamp-Connect Series

These transformers are specifically designed for LED systems and feature the exceptional clamp-type terminal blocks for fast and secure connections. These transformers are limited to 12V and 15V taps since LED systems accommodate a wide range of acceptable voltage.

## AMP® Multi-Tap Series Transformers

These transformers feature 12V, 13V, 14V, and 15V voltage taps.

## AMP® PRO Series

These transformers feature voltage taps from 12V through 22V.

## AMP® Dual Circuit Transformer

This transformer has two timer and photocell slots to run two independently controlled landscape lighting systems from one unit. Ideal for homes and properties that have multiple lighting zones or security lighting.



*InLine Power Supply*



*150W Slim Line Transformer*



*300W Clamp-Connect Transformer*



*900W 12-22V Multi-Tap Pro Transformer*



*600W (2 x 300W) Dual Circuit Transformer*



# CONNECTORS & HUBS

Connectors are crucial to the integrity of any landscape lighting system. We carry a wide variety of high-quality connectors and hubs that will suit any project's demands.



## PRO JUNCTION HUB

### AMP® Clamp-Connect Series

This series uses clamp-type connectors for simple, fast, and secure connections.

### Best for System Maintenance

Without the use of silicone sealant, this hub allows you to access your landscape lighting connections long after installation. This also allows for easy addition and removal of fixtures after installation.

### AMP® Innovation Series

This hub is a AMP® innovation and is patent pending.



## PRO JUNCTION DIRECT BURIAL CONNECTORS

These connectors feature clamp-connect technology for simple, fast, and secure connections. They have reservoirs that are pre-filled with waterproof silicone grease. These connectors are AMP® innovations and are patent pending.

### 1. AMP® Pro Nano-Junction 3-Way

Connects up to 3 leads per unit; or 2 fixtures and 1 home run.

### 2. AMP® Pro Micro-Junction 5-Way

Connects up to 5 leads per unit; or 4 fixtures and 1 home run.

### 3. AMP® Pro Macro-Junction 8-Way

Connects up to 8 leads per unit; or 7 fixtures and 1 home run.



DryConn®  
Black & Grey  
Black & Blue



ACE Connector™



DryConn® DBR/Y-600  
with Copper Crimps



Line Voltage  
Junction Hub

# LED LAMPS

We offer a variety of LED bulbs specifically designed for outdoor, low voltage lighting. Our LED bulbs use the latest technology, are available at factory-direct pricing, and carry a lifetime warranty.



LED MR8



LED MR11



LED MR16



ADJUSTABLE BEAM  
ANGLE LED MR16



COLORED LED



LED PAR36



R7S



LED G4 BI-PIN



LED SCB

## 120V LED LAMPS

Specifically designed for line voltage (120V) outdoor landscape lighting. Fully encapsulated to keep moisture away from LED.



120V GU8 BI-PIN



120V LED PAR30



120V LED PAR38



# ACCESSORIES

We offer a variety of accessories to go with your low-voltage fixtures such as different sized ground stakes, glare guards, extension risers, fixture mounting options, and much more.



*9" Brass Ground Stake*



*Trident 8" Ground Stake*



*10" PVC Ground Stake*



*13" PVC Ground Stake*



*AMP® ONE  
Design-Master Remote*



*Brass Extension Riser  
(6", 12", 24")*



*Copper Extension Riser  
(6", 12", 24")*



*Brass Black Extension Riser  
(6", 12", 24")*



*HydraPro™ Grated Glare  
Guard (MR16 / MR11)*



*HydraPro™ Beacon Glare  
Guard (MR16 / MR11)*



*HydraPro™ Shielded Glare  
Guard (MR16 / MR11)*



*HydraPro™ Turret Top Glare  
Guard (MR16 / MR11)*



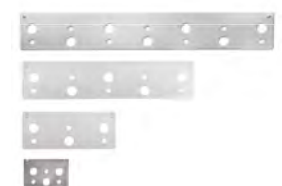
*2" Extended Glare Guard  
(Brass)*



*3" Extended Glare Guard  
(Brass)*



*Hardscape Glare Guard  
(3", 6", 12", 18")*



*Hardscape Mounting  
Plate (3", 6", 12", 18")*



*Surface Mount (Brass)*



*Lanai Mount (Brass)*



*Gutter Mount (Brass)*



*Tree Strap Mounting Kit*

# BECOME AN AMP® PRO

If you are a lighting professional, find out how to gain access to AMP® products, expert support, and valuable resources.



## **AMP® ONE TECHNOLOGY EMPOWERS THE DESIGNER**

Make design decisions in the field. Control light levels and beam spreads on the fly. Never compromise.



## **“NO HASSLE” LIFETIME WARRANTY**

Durable construction, robust circuitry, and protection from the elements. Survives a lifetime - we guarantee it.



## **SOLID CAST BRASS CONSTRUCTION**

Heavy-duty cast brass components will not bend, break, or corrode. Maintains beauty and functionality year after year.



## **UL LISTINGS ENSURE PRODUCT SAFETY**

Install with confidence. AMP® products comply with critical certifications & standards.



## **WHOLESALE & BULK PRICING**

Certified AMP® Pro's get access to an exclusive wholesale pricing and bulk pricing discounts on certain products.\*

# **AMP®**

**[www.amplighting.com](http://www.amplighting.com) | (813) 978-3900**

© 2022 AMP® Lighting. All Rights Reserved.

